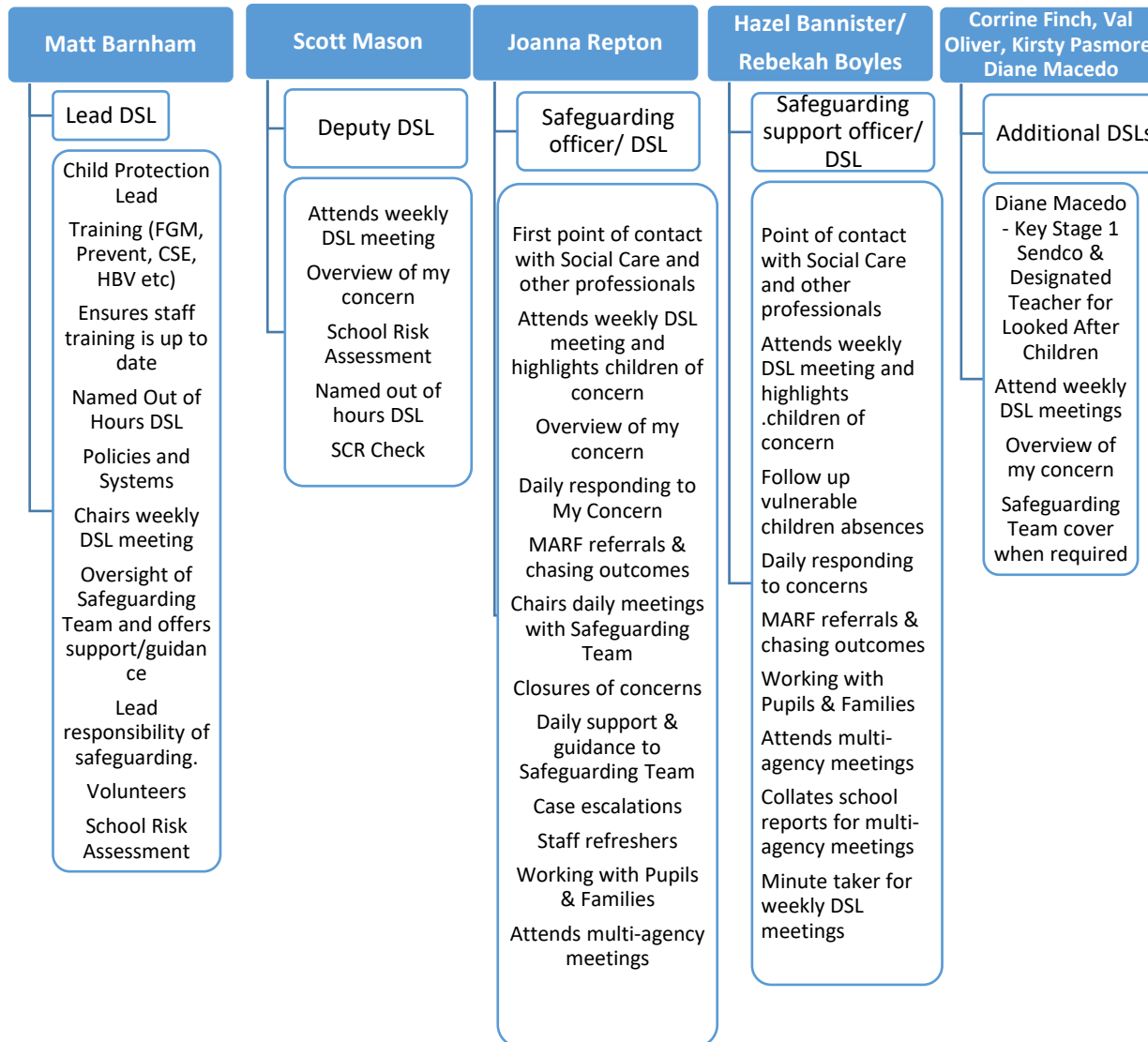


SAFEGUARDING AT ROSSLYN PARK PRIMARY AND NURSERY SCHOOL

Intent: Safeguarding is everyone's business. We are committed to promoting the safety and welfare, both physical and emotional, of all our children and adults. Our intent is to ensure that our safeguarding procedures and practice are exemplary at Rosslyn Park Primary and Nursery School and that everyone feels safe and supported.

Safeguarding Structure – Core DSL Team



Wider Safeguarding Team

Named First Aid Lead: Lorraine Clay

Staff Wellbeing Lead: Emma Kirkbright

Site Security: Martin Soar

School Business Manager: Andy Mullahy

- Overview of Single Central Record
- Recruitment

Safeguarding Governor: Kari Anson
- Termly Safeguarding Governor Visits

Attendance Officer: Yve Lee

Place 2 Be School Project Manager: Julia Batchelor-Needham

Emotional Literacy Support Assistants:

Nicole Bascombe and Joy Stark

Key Stage 2 SENDCO: Glenn Hickson

Behaviour Mentor: Lynsey Molloy

Health Mentor: Jake Brown

